

Aeropile – 100 DC pelo grego Hero de Alexandria

http://en.wikipedia.org/wiki/Steam_engine



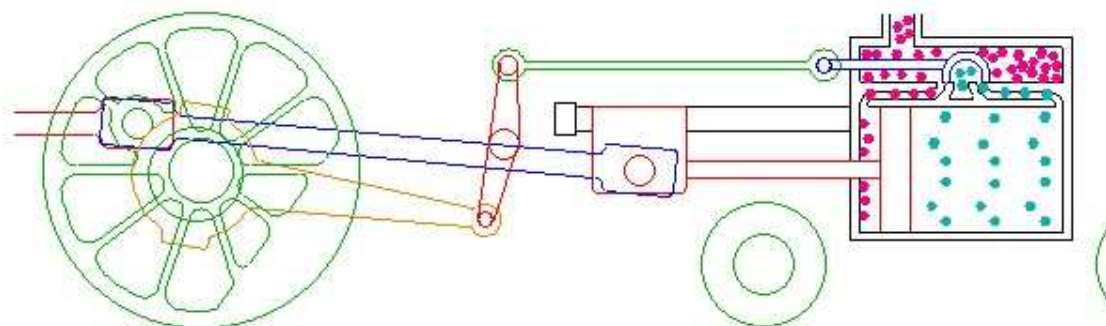
Simple steam boat

<http://scitoys.com/scitoys/scitoys/thermo/thermo.html>



Steam Locomotive primeira: 1814

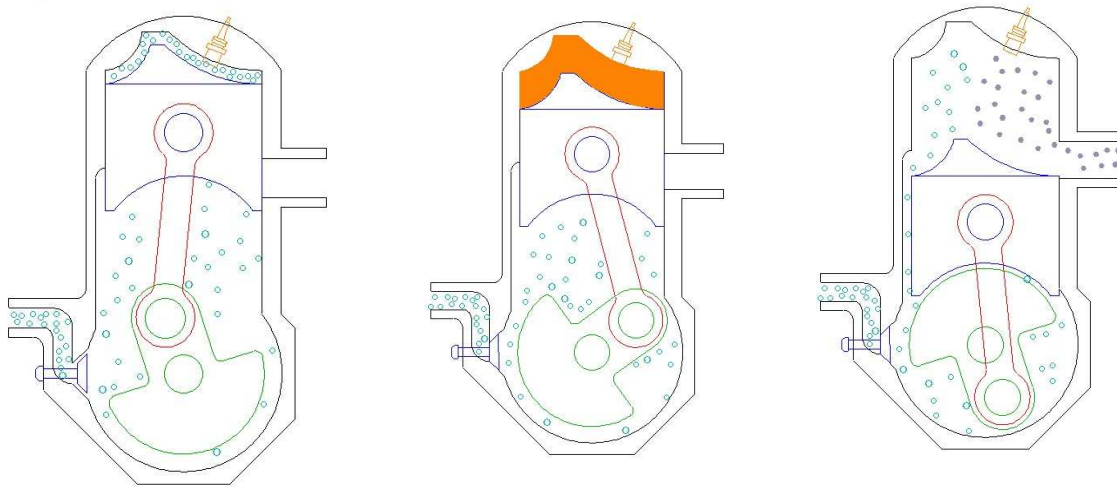
<http://www.animatedengines.com/>



© 2000-2011 AnimatedEngines.com. All rights reserved.

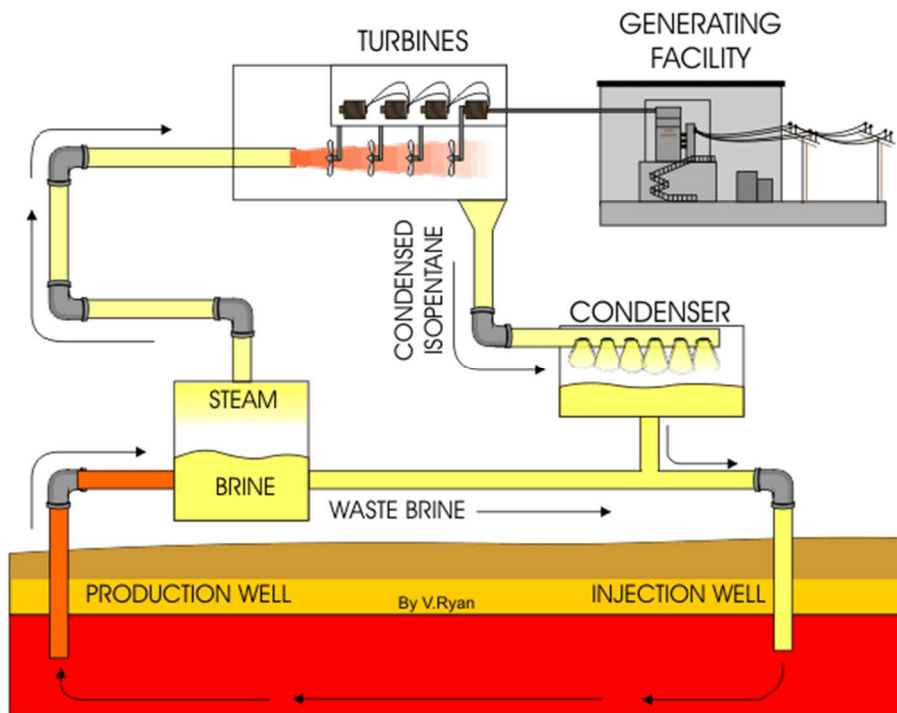
First two stroke engine: 1881

Two Stroke Engine



Steam power stations – first 1882

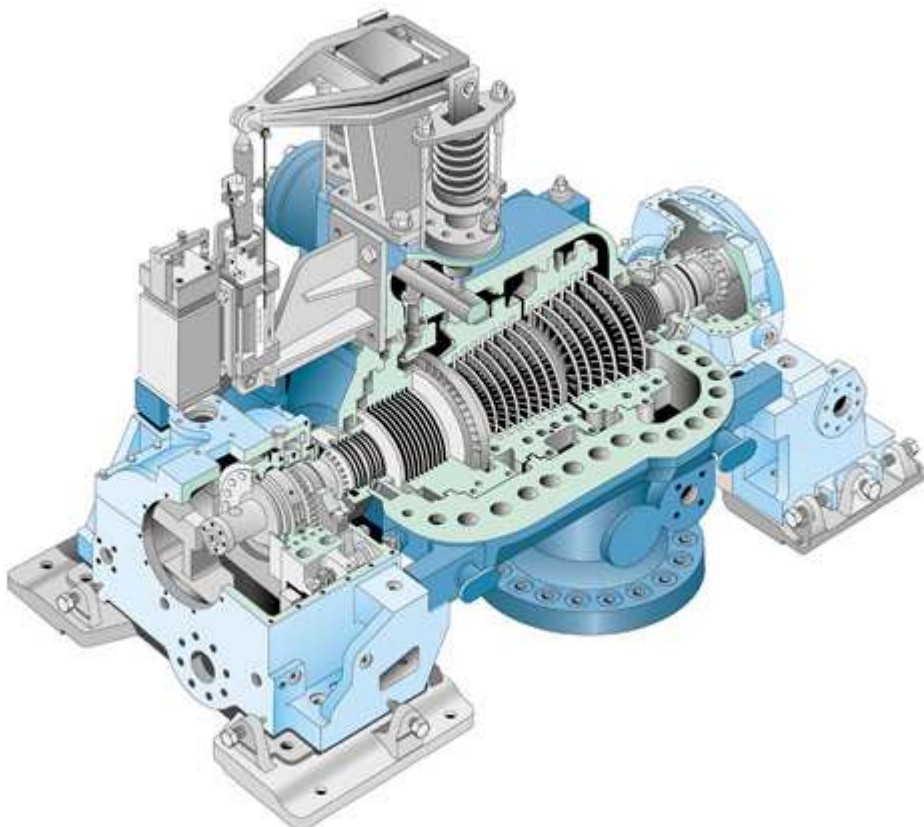
http://www.digtheheat.com/geothermal/flash_power_plant.html



Modern Steam turbines – first 1884

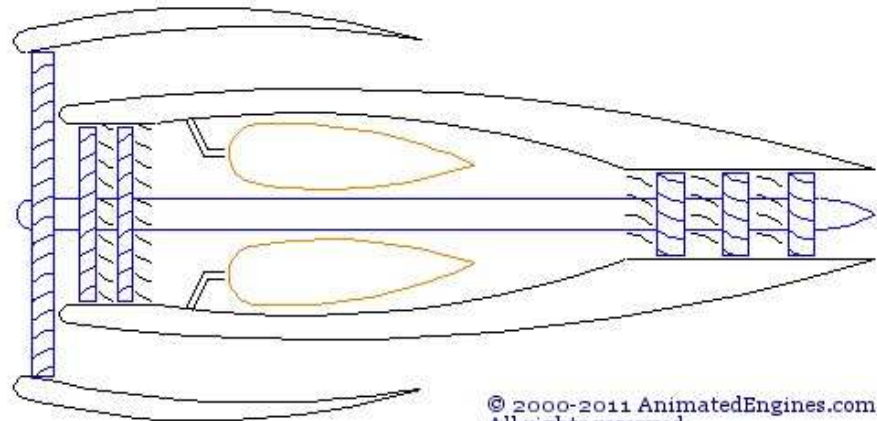
The SST-600 is a single casing steam turbine, designed for operation with speed ranging from 3,000 to 18,000 rpm for generator or mechanical drives up to 150 MW.

<http://www.energy.siemens.com/us/en/power-generation/steam-turbines/sst-600.htm>



First turbofan: 1943

Turbofan



© 2000-2011 AnimatedEngines.com.
All rights reserved.

Refrigerator – first 1927

http://www.chemistry.wustl.edu/~courses/genchem/LabTutorials/Thermochem/fridge_movie.html

